



# Release Notes

## BREEZE 3D Analyst 2.3.2

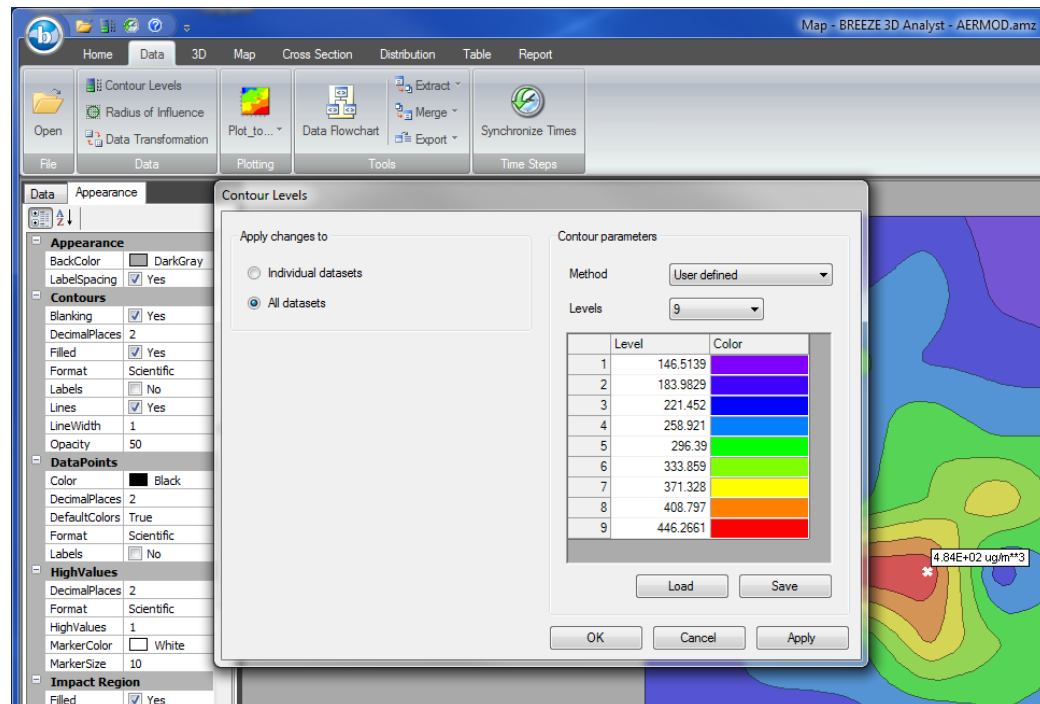
BREEZE Software  
+1 (972) 661-8881  
[breeze@trinityconsultants.com](mailto:breeze@trinityconsultants.com)  
[breeze-software.com](http://breeze-software.com)



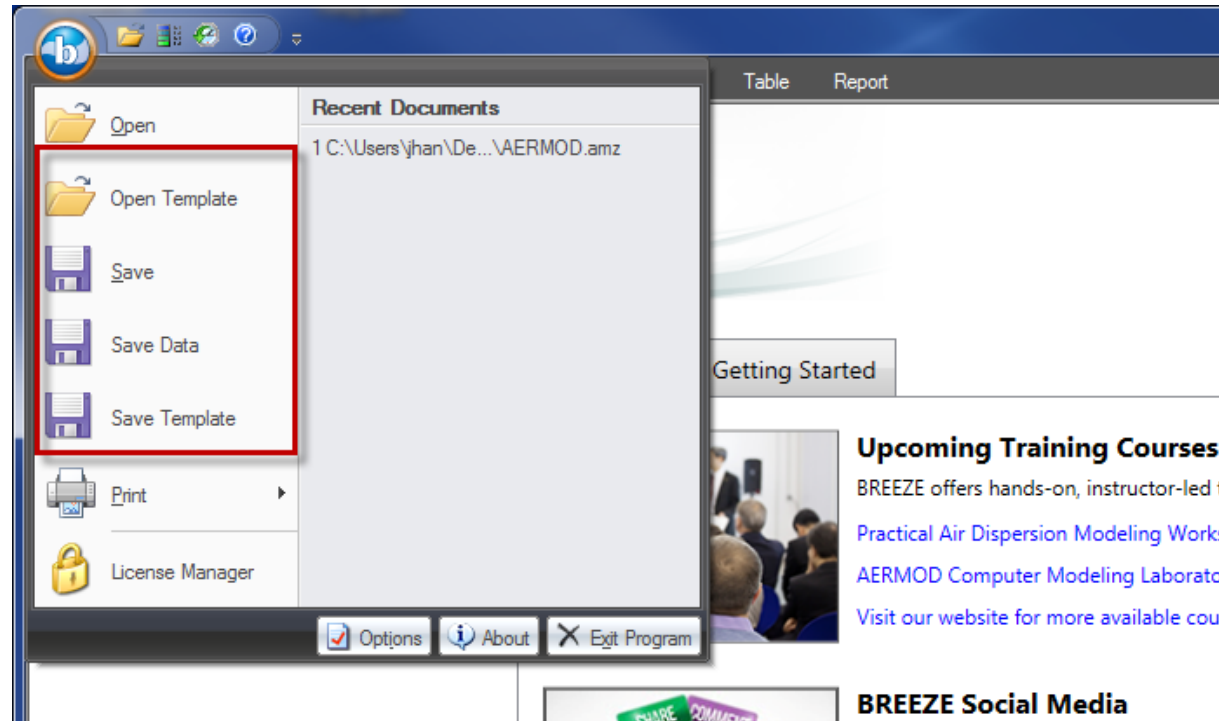
## BREEZE 3D Analyst 2.3.2 Release Notes

### What's New in 2.3.2

- Enabled a feature to save the Appearance settings for the model result graphics, including the settings for Contour Levels

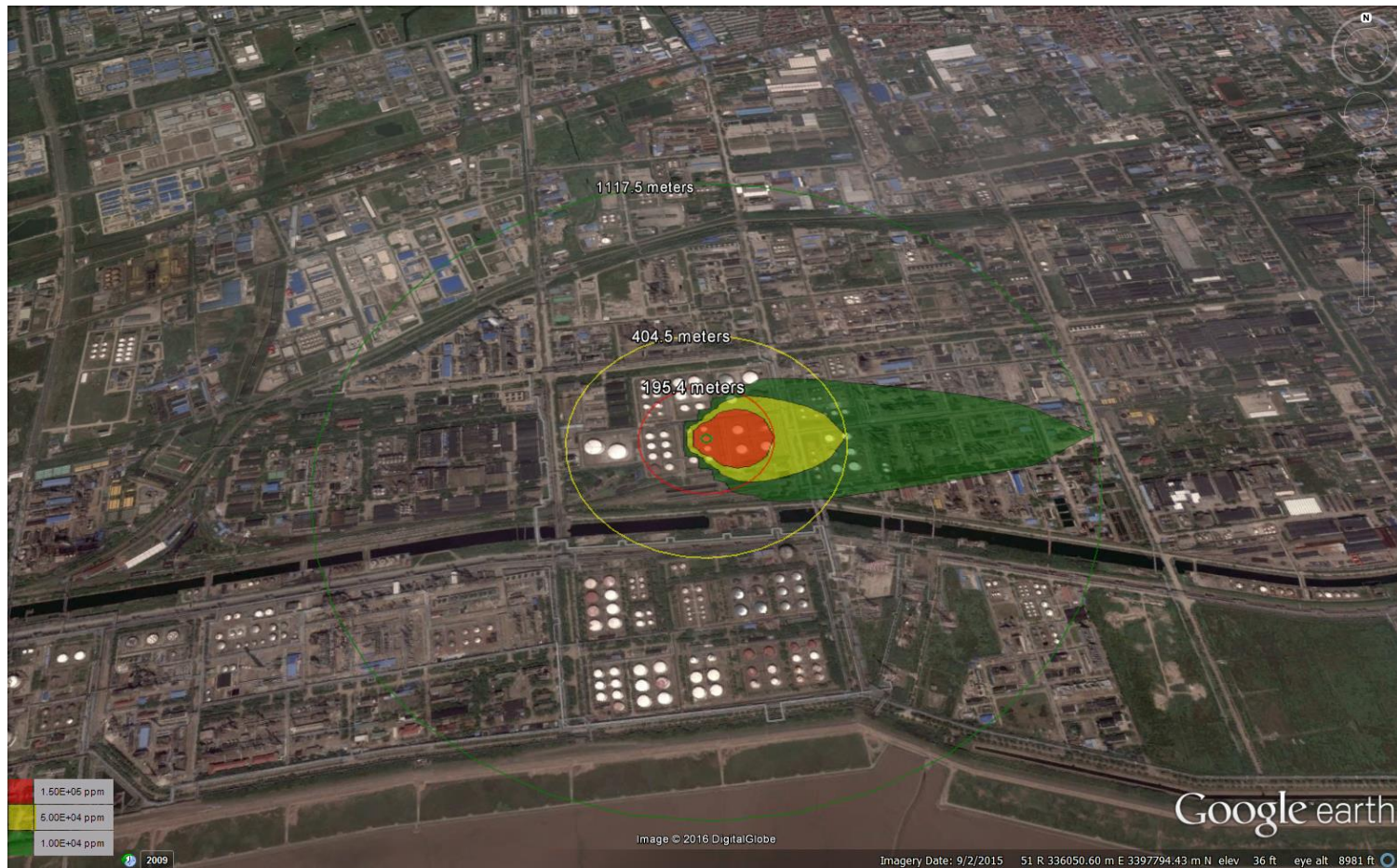


- Added options to save data and project templates under the BREEZE Application button



- Added support for non-English operating systems' administrator privilege

- Added the distance (from source) values to each Level of Concern when plotting to Google Earth through 3D Analyst, for files imported from BREEZE Incident Analyst



- Enabled base maps to be named with XML reserved characters
- Improved the speed of 3D Analyst on network licensing system (network dongle)
- Improved the quality of output image
- Added an option to change the color for Data Points

## Bug Fixes

### For All Users

- Fixed the inconsistency of contour levels displayed under the 3D Analyst Map tab and in Google Earth
- Fixed a bug that caused the previous project's polygon object(s) to display under the Map tab even when the current case did not contain any polygon object
- Fixed a problem that caused the base map to display incorrectly under the Map tab when a non-UTM coordinate system was used
- Corrected the axis labels under the Cross Section tab
- Fixed the Help menu links of Surfer and Google Earth under the Plotting page

### For BREEZE AERMOD/ISC Users

- Fixed a bug that did not allow large post files generated by BREEZE AERMOD to open directly in 3D Analyst
- Resolved the bug that failed to display the correct concentration unit when it was customized for imported files



- Fixed the bug that sometimes caused the unit of deposition under the Map tab to not display correctly for imported files

#### **For BREEZE CALPUFF Users**

- Fixed the error caused when opening the Puff files

#### **For BREEZE Incident Analyst Users**

- Fixed a problem that failed to plot 3D Analyst's graphical results to Surfer for certain imported files
- Rectified the unit of duration shown under the Map & Table tabs for imported files
- Fixed an issue that caused the animation created to stop several time steps before the end for imported files
- Fixed a bug that caused the Jet fire model files from BREEZE Incident Analyst to fail to import to 3D Analyst
- Fixed an issue that caused the first time period under the Report tab to not display correctly for SLAB files
- Fixed the error caused when creating animations for INPUFF model files

## Known Issue

- Surfer Version 11.0 is not compatible with BREEZE 3D Analyst due to a change in the specified version (<http://www.goldensoftware.com/forum/viewtopic.php?f=1&t=8447>). Surfer users should update from Surfer 11.0 to 11.1 or higher versions.